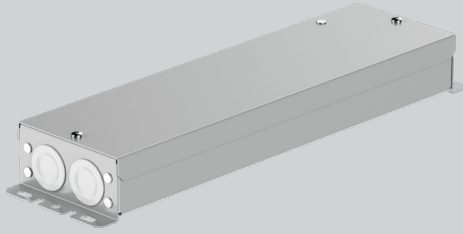


R-LINE[®]

POWER SUPPLY



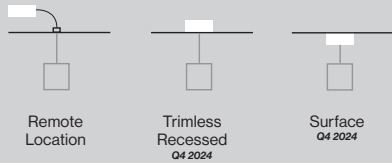
5 YEAR
limited
led warranty



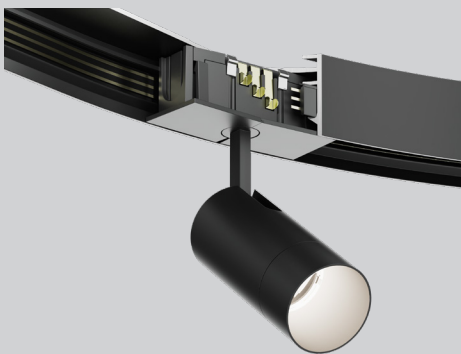
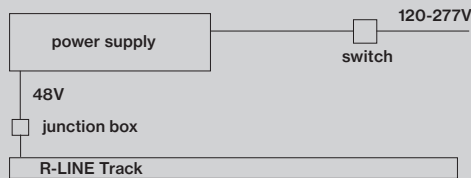
PERFORMANCE

- Proprietary 48V driver with 1% dimming technology
- UL rated enclosure
- Short circuit protection
- Various mounting options (*available Q1 2024*)

MOUNTING



REMOTE DRIVER



Catalog Number Example

RLPS-REM-BL-TR-1C-UNV-48V-100W-010V

A SYSTEM

R-LINE R L P S

F INPUT VOLTAGE

120 - 277V UNV

B MOUNTING

Remote Box REM
Mud-in Box available Q3 2024 RTL
Surface Mtd. Box available Q3 2024 SUR

G OUTPUT VOLTAGE

48V low constant voltage 48 V
3 pole connection 48V+ / 48V- / PVM

C HOUSING COLOR

Raw
Black surface mount only BL
White surface mount only WH

H CAPACITY

60W 0 6 0 W
100W 1 0 0 W
2x60W 1 2 0 W
2x100W 2 0 0 W

remote box & mud-in only available in raw

D TYPE

Track T R
Integrated Uplight (100W) U P

track & uplight cannot be powered combined

I DIMMING

No Dimming N O D
0-10V logarithmic, 1% dimming 0 1 0 V
0-10V logarithmic, dim-to-off - available Q1 2024 D 1 0 V

for 0-10V linear dimming curve contact XAL

E CIRCUIT

1 Circuit 1 C
2 Circuit 2 C

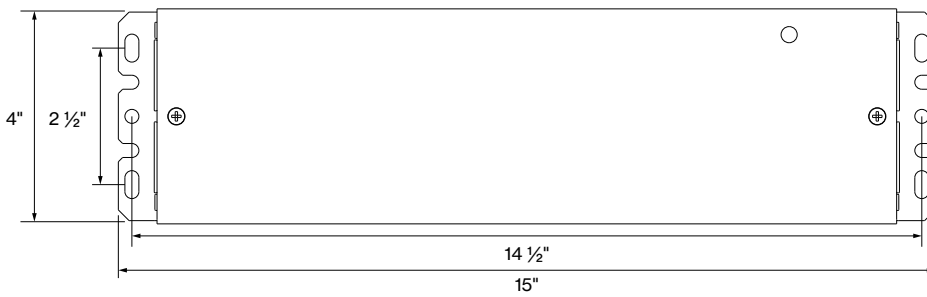
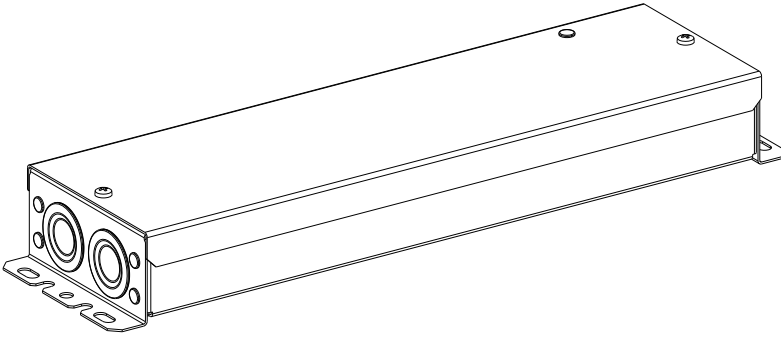
each track circuit needs its own driver

J CCEA available Q1 2024

CCEA Rated (Chicago Plenum) C P
remote box & mud-in only

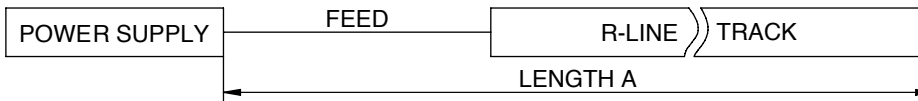
BASO
basolighting.com
xalusa.com

DIMENSIONS



WIRING DIAGRAM

| LENGTH A (see diagram below) | | | | | |
|------------------------------|--------|--------|--------|--------|--------|
| | 12 AWG | 14 AWG | 16 AWG | 18 AWG | 20 AWG |
| 60W | 150' | 150' | 90' | 60' | 40' |
| 100W | 90' | 90' | 60' | 40' | 20' |



* Due to voltage drop and to fulfill EMC requirements, total fixture power [W] must be between 60% & 95% of the drivers capacity.

Calculations based at max capacity of the driver.

**Please check distance limits (voltage drop table)

- Max possible fixture power < 100W.