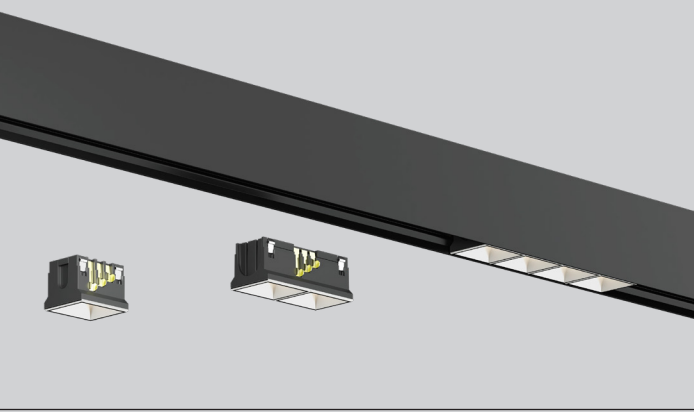


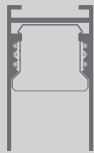
# R-LINE LOUVER



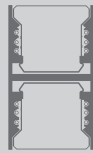
## CONFIGURATIONS



R1 Track



R2 Track



R3 Track

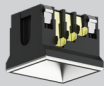
## REFLECTOR COLOR



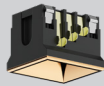
Black



White



Chrome



Bronze

## ADAPTER COLORS

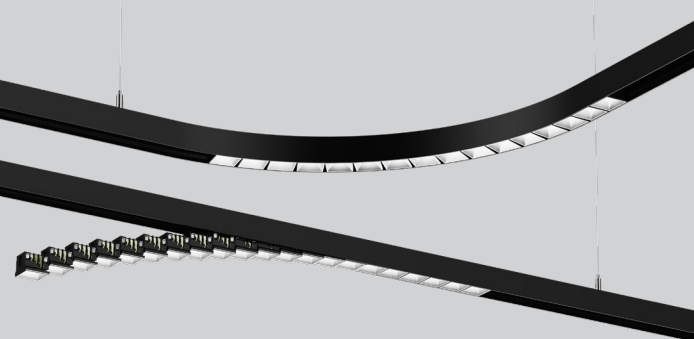


Black



White

## TRACK CONFIGURATIONS



## Catalog Number Example

RLINS-LOUVER-1-BMBL-35K-C90-48V-010V-100LL-5W-4CE

## Attributes

### A SYSTEM

R-LINE R L I N S

### B PRODUCT

Louver shallow inset LOUVER

### C INSET HEIGHT

1" Inset flush with R1/R3 track 1  
2" Inset flush with R1/R3 track 2

### D REFLECTOR COLOR

Black Matte B M \_ \_  
Black Gloss B G \_ \_  
White Matte W M \_ \_  
White Gloss W G \_ \_  
Chrome C H \_ \_  
Bronze Gloss B Z \_ \_

### E ADAPTER COLOR

Black \_ \_ B L  
White \_ \_ W H  
recommendation: adapter & track color should match

### F CCT/CRI

2700K /CRI>90 2 7 K - C 9 0  
3000K /CRI>90 3 0 K - C 9 0  
3500K /CRI>90 3 5 K - C 9 0

### G VOLTAGE

48V low constant voltage 4 8 V  
remote driver required (see driver cutsheet)

### H DIMMING

0-10V 1% dimming 0 1 0 V

### I CIRCUIT

1 or 2 Circuit \*  
\*leave blank

### J OUTPUT

100 lm/louver 5W/louver 1 0 0 L L - 5 W

### K CELLS

1-Cell 100lm 1 C E  
2-Cell 200lm 2 C E  
4-Cell 400lm 4 C E

## Other Options

### + LINEAR OPAL

see R-Line Linear Opal cutsheet

### + CURVE OPAL

see R-Line Curve Opal cutsheet

### + SPOT

see R-Line Spot cutsheet



5 YEAR  
limited  
led warranty

**DIMENSIONS**

