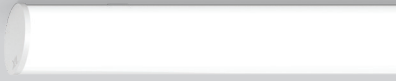
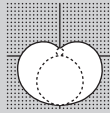


# TUBO DIRECT



## PERFORMANCE

- Powder coated white
- Up to 143 lm/W
- CRI > 80 & CRI > 90



## MOUNTING

Surface

Pendant

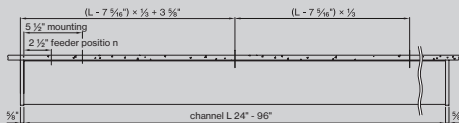


## DIMENSIONS

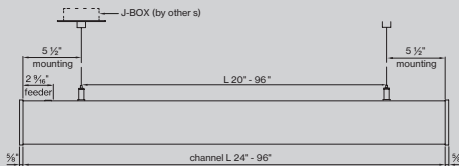
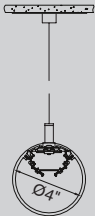
### FIXTURE LENGTH

$L_{total} = L_{channel} + \frac{5}{8}''$  in total for two endcaps

Surface



Pendant



## MAKE YOUR ROOM STAND OUT



## Catalog Number Example

TUBO-SUR-BL-OP-27K-C90-UNV-010V-1050LF-NLC-ST-24IN

### A RANGE

TUBO TUBO

### G VOLTAGE

120V / 277V UNV  
347V (only 0-10V dim) 3 4 7

### B MOUNTING

surface SUR  
pendant PDT

pendant suspension set includes cable suspension and one white power feeder with a white junction box cover

### H DIMMING

0-10V 1% 0 1 0 V  
DALI DALI

Lutron EcoSystem LES 1  
Quantum, Vive, GRAFIK Eye, HomeWorks

Power over ethernet POEC

consult customer service for compatibility

for custom dimming protocol, please contact customer service

### C COLOR

White WH  
Black BL  
Grey GR

fine texture powder coated

### D LENS

HP opal cover OP

### E CCT

2700K 2 7 K  
3000K 3 0 K  
3500K 3 5 K  
4000K 4 0 K  
Custom CCT x x K

### I OUTPUT LM/FT

680lm/ft 100% ↓ 0 6 8 0 L F  
1050lm/ft 100% ↓ 1 0 5 0 L F

for custom lumen packages, please contact customer service

### J CIRCUIT / EM

Single circuit \*  
EMC night light circuit N L C  
minimum run length > 8'  
EMP EM #  
minimum run length 4' or 8'

\* leave blank

### F CRI

CRI > 80 C 8 0  
CRI > 90 C 9 0

### K SHAPE / PATTERN

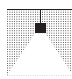
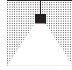
Linear S T

### L DIMENSIONS IN INCH

Linear 2' 2 4 I N  
Linear 4' 4 8 I N  
Linear 6' 7 2 I N  
Linear 8' 9 6 I N  
Linear custom # # I N

dimensions starting at 2' in 1' increments; for closer increments < 1', please contact customer service

### Technical data

	SIZE TYPE	LED COLOR TEMPERATURE	INPUT WATTS	DELIVERED LM TOTAL	DELIVERED LM / FT	DELIVERED LM DIRECT	OPTICAL EFFICIENCY	LUMINAIRE EFFICACY
 e LED	4' linear	40K	19W	2720lm	680lm/ft	2720lm	85%	143lm/W
	6' linear		29W	4080lm		4080lm		
	8' linear		38W	5440lm		5440lm		
 e <sup>2</sup> LED	4' linear	40K	31W	4200lm	1050lm/ft	4200lm	85%	136lm/W
	6' linear		46W	6300lm		6300lm		
	8' linear		61W	8400lm		8400lm		

for 30K or 35K multiply lm value by 0.96

### Accessories

#### MOUNTING

extra 78" cable suspension with barrel mount	ACC - TUB - CSB - 78 - WH
extra junction box cover	ACC - JB - WH
on-grid suspension barrel mount	ACC - CSB - RW

### TUBO mounting instructions

Get access to TUBO mounting instructions faster by scanning the QR code.



[www.xalusa.com/resources/mounting-instructions/tubo](http://www.xalusa.com/resources/mounting-instructions/tubo)